

The
 **NAFEM**
Show[®] | 

Kolpak – Playbook

WHAT'S THE MESSAGE...

- ▶ Cool Evolution – A Smarter Way to Cool
- ▶ Innovation
- ▶ ArcticFox
- ▶ Air Shield
- ▶ Hands-Free - Motion Sensor & Alarms
- ▶ Refrigeration
- ▶ Boltover Door Section



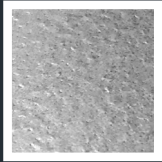
Available Finishes for



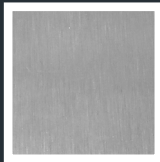
KOLPAK®

Protecting Your Future

Walls Doors & Ceilings



26 Gauge Embossed Galvalume (Standard Finish)



22 Gauge 304 Stainless Steel (non-mag)



20 Gauge Embossed 304 Stainless Steel (non-mag)



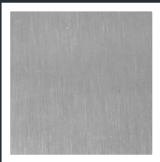
.040 Stucco Aluminum



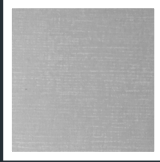
26 Gauge Embossed Brown Galvanized



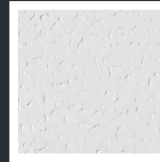
26 Gauge Embossed White Galvalume



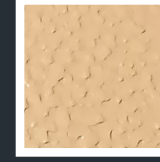
20 Gauge 304 Stainless Steel (non-mag)



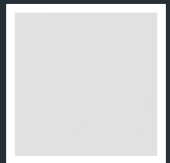
22 Gauge Paint Grip Galvanealed (paintable)



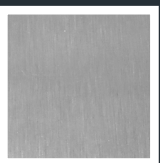
.040 Stucco White Aluminum



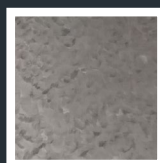
26 Gauge Embossed "Bittersweet" Beige Galvalume



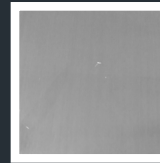
24 Gauge Smooth White Galvanized



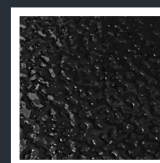
18 Gauge 304 Stainless Steel (non-mag)



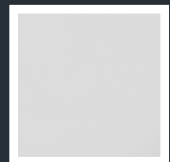
20 Gauge Smooth Galvanized



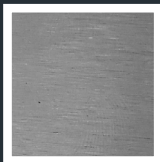
.040 Smooth Aluminum



26 Gauge Embossed Black Galvanized



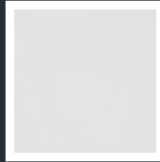
20 Gauge Smooth White Galvalume



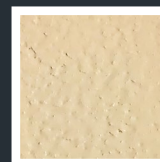
20 Gauge 430 Stainless Steel (mag)



22 Gauge 430 Stainless Steel (mag)



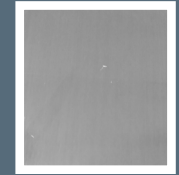
.040 Smooth White Aluminum



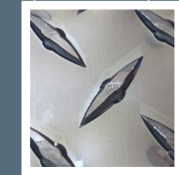
26 Gauge Embossed Beige Galvanized

Floors

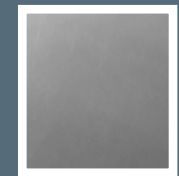
Kickplates & Wainscot



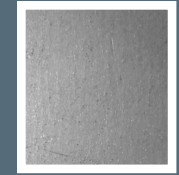
.100 Smooth Aluminum (Standard Floor)



.100 Diamond Treadplate Aluminum Floor & Wainscot (.063, .125 & .187 available)



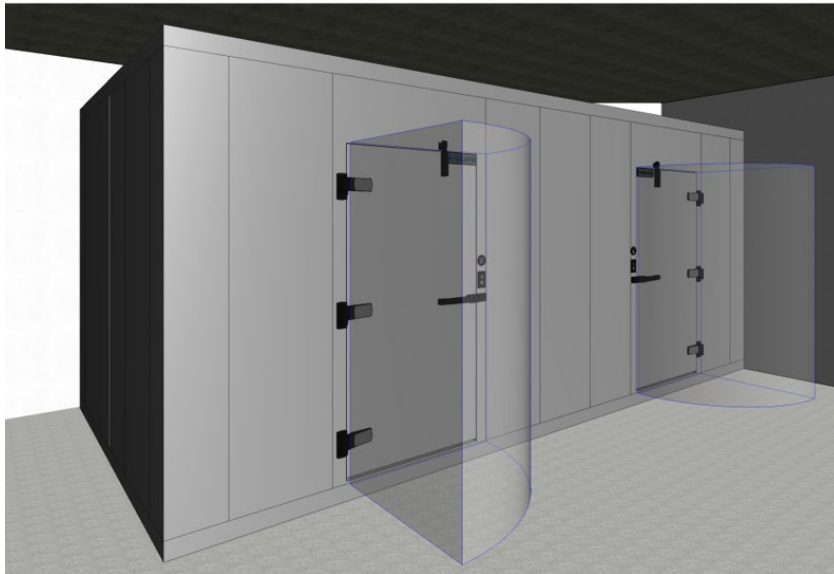
16 Gauge Stainless Steel Floor, Kickplates, & Wainscot



14 & 16 Gauge Smooth Galvanized (must have overlay or thin set for NSF)

INNOVATION

- ▶ Modularm 75LCT Touch Screen
- ▶ 1826 Intelli-Vent®
- ▶ Embossed Stainless
- ▶ Revit



INNOVATION – MODULARM 75LCT TOUCH SCREEN

- ▶ Touch Screen Convenience
- ▶ Temperature Alarms
- ▶ Door Ajar Alarms
- ▶ AC Failure Alarms
- ▶ Autaset™ Technology

- ▶ Saves Energy
- ▶ Improves Efficiency
- ▶ Reduces Coil Icing
- ▶ Lowers Maintenance Costs
- ▶ Helps to maintain product integrity



INNOVATION – 1826 INTELLI-VENT®

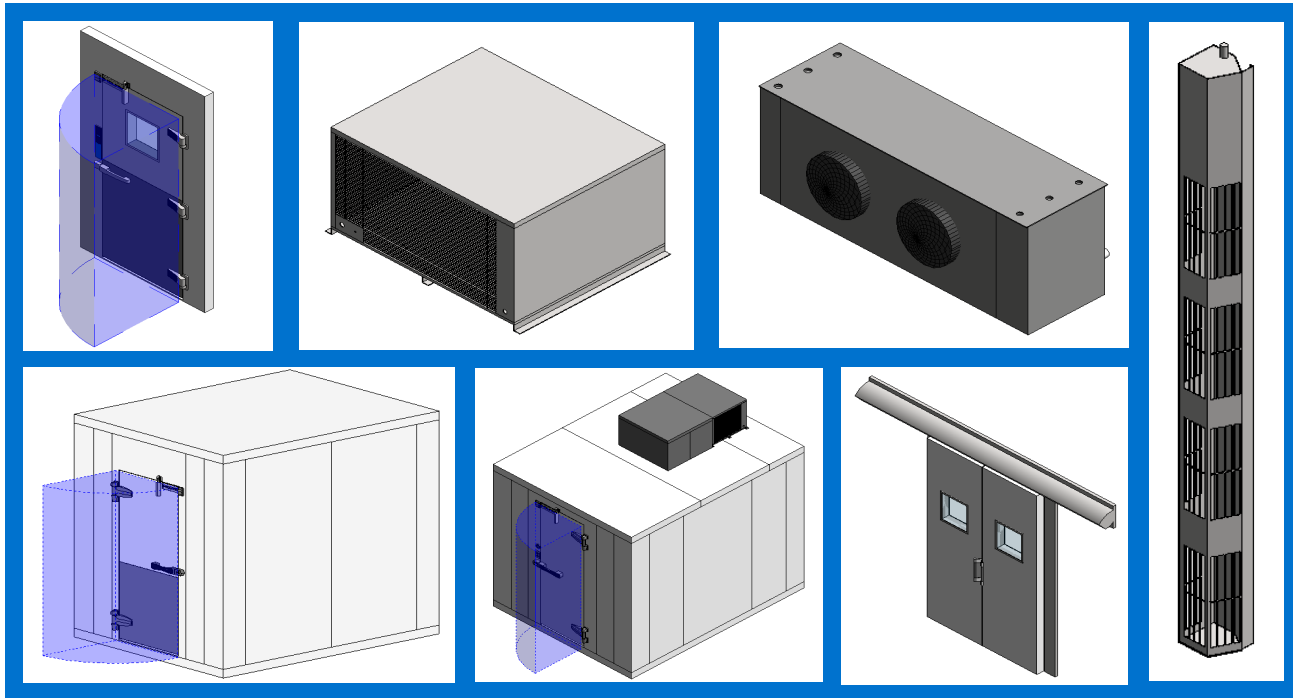
- ▶ Dual Port Vent – Greater Air Flow
- ▶ Always “On” LED Light
- ▶ Integrated Electrical J-Box



Inside Walk-In



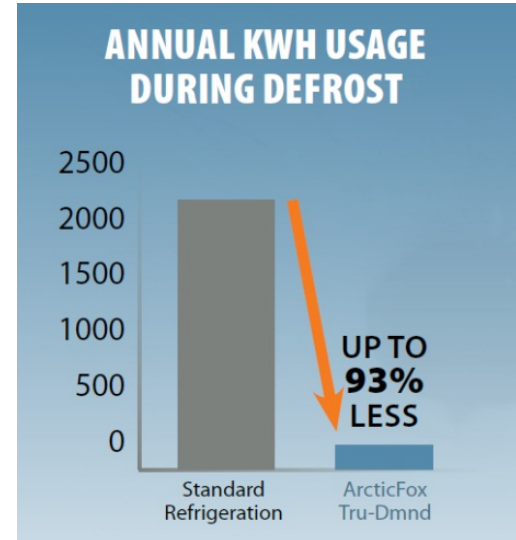
Outside Walk-In



- ▶ Repeat Walk-Ins
- ▶ Sliding Doors
- ▶ Air Shield
- ▶ Kolpak Doors
- ▶ Condensing units
- ▶ Evaporators

ARCTICFOX

- ▶ Tru-Dmnd by ArcticFox – Avoids up to 93% of standard system defrost cycle
- ▶ Deluxe Display – RJ12 connection to Tru-Dmnd, with dry contacts

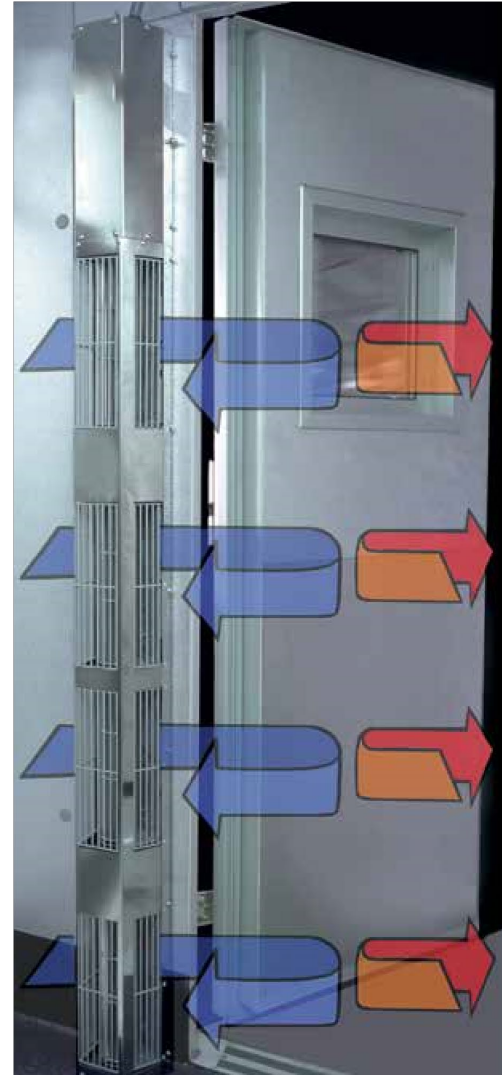


- ✓ Energy savings
- ✓ Equipment life
- ✓ Temperature stability
- ✓ Sustainability

AIR SHIELD

- ▶ Patented design
- ▶ Cold Air In / Warm Air Out
- ▶ New or Retrofit
- ▶ Cooler or Freezers

Saves up to 20% energy
during heavy usage periods



REFRIGERATION

- ▶ 120 Series Refrigeration
- ▶ Scroll Series Refrigeration
- ▶ Polar-Pak Series Refrigeration
- ▶ Multi-Pak & Rack Series Refrigeration



1-Year Parts & Labor
Warranty

BOLTOVER DOOR SECTION

Give your walk-in a lift

- ▶ Door frame pre-drilled
- ▶ Simple Ordering
- ▶ Available for any existing walk-in
- ▶ Cooler or Freezer

